

FABRIC NEWS

2025

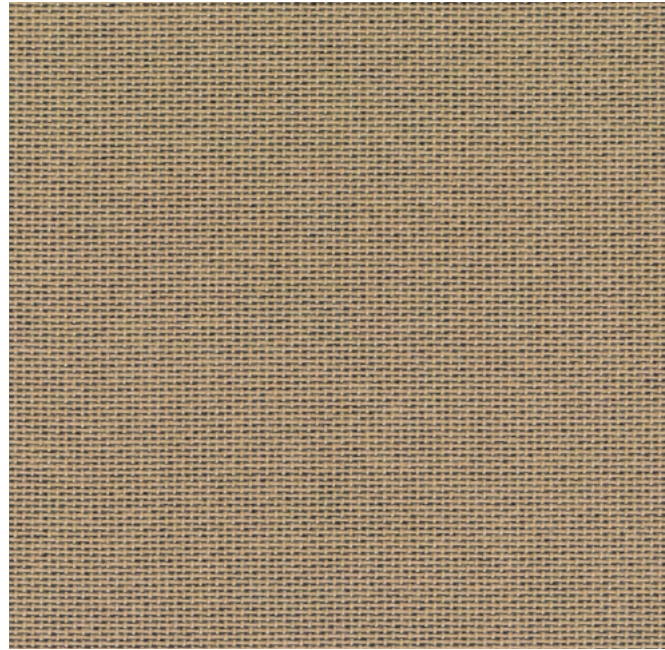
HAY

FABRIC NEWS

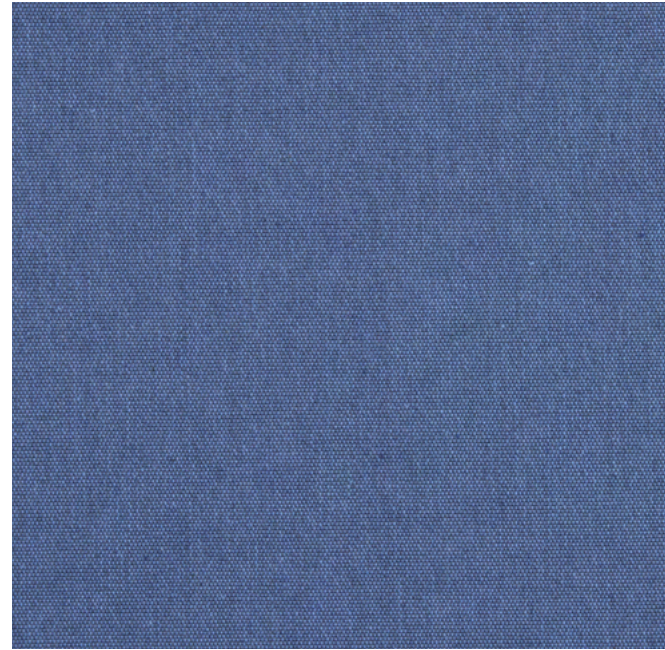
HAY's fabric assortment for Spring 2025 comprises a wide assortment of colours, compositions, and textures that offer a wealth of upholstery options. Carefully selected for their specific tactile quality, expression, and durability, each fabric is designed to complement HAY's furniture and is suitable for both domestic and contract environments.



OVERVIEW



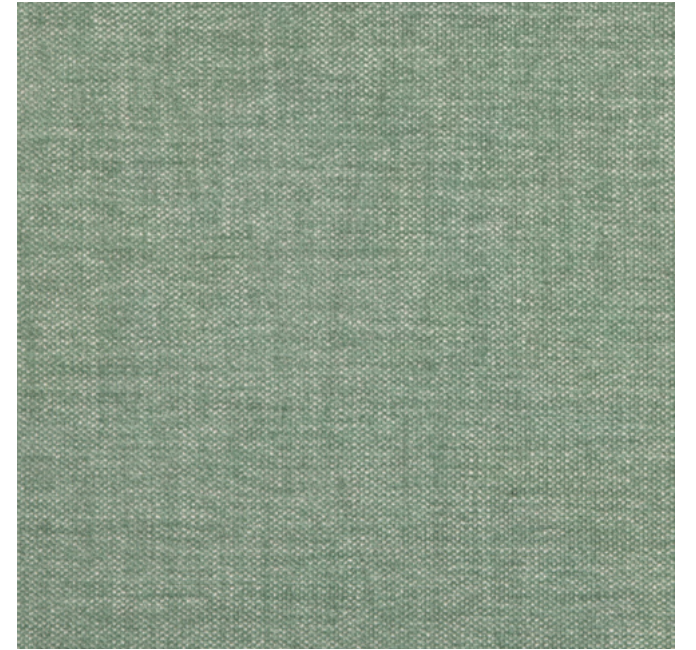
AUTUMN



STORY



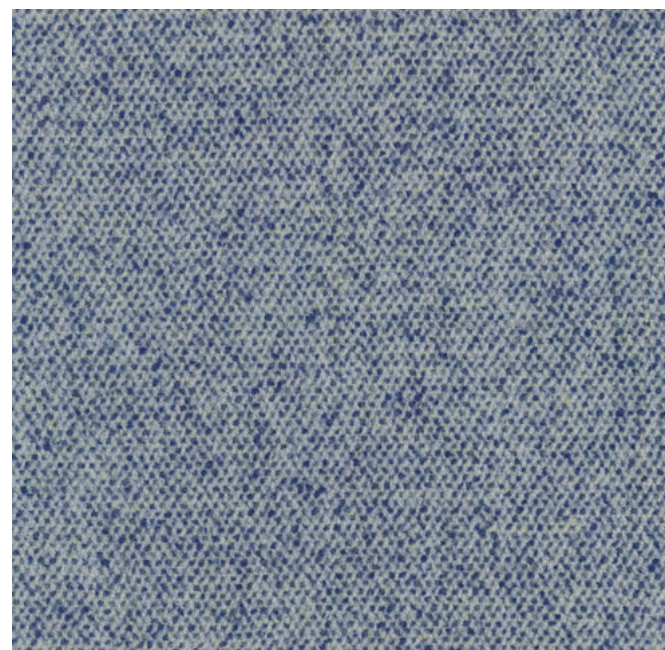
TURF



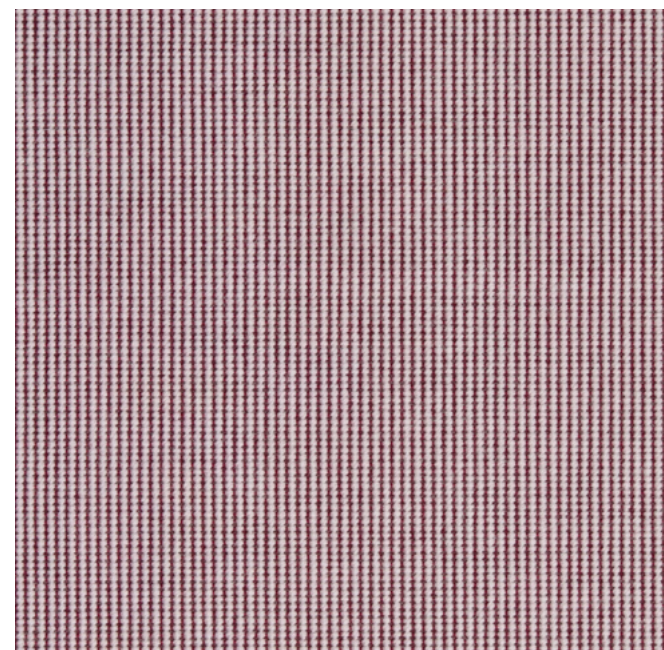
OVERLAP



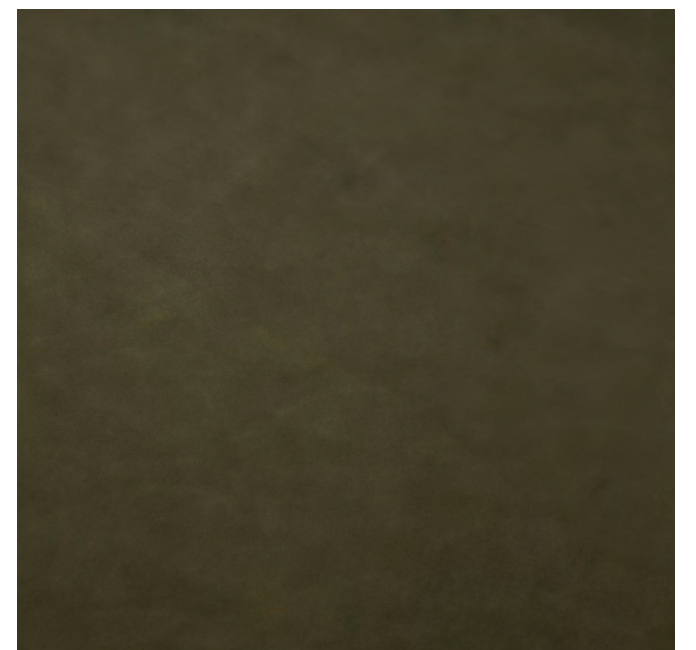
VOLUME



VANIR



YUMA



SENSE | LEATHER

AUTUMN

Design by Teruhiro Yanagihara, Kvadrat

Autumn is an upholstery fabric woven from 100% recycled polyester yarn constructed from used plastic bottles. Woven in a layered double-beam weave, Autumn's naturally soft surface invites touch and offers exceptional comfort. The nuanced palette combines a mono-coloured background underneath a melange layer with yarns created from two fibre-dyed colours. Autumn's graduating colour options and vibrant expression make it ideal for a wide range of soft furnishing applications in corporate and residential contexts.



Autumn 651



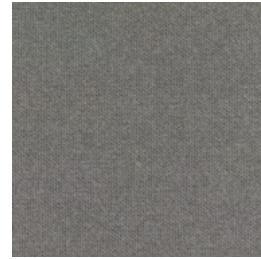


Silhouette 2-Seater | Autumn 0651

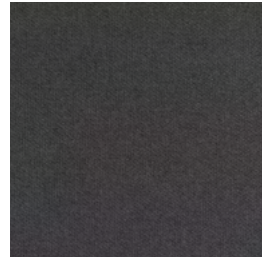
AUTUMN



0101



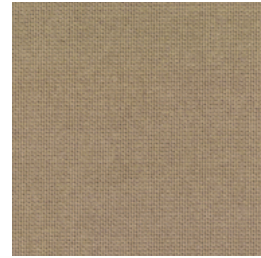
0131



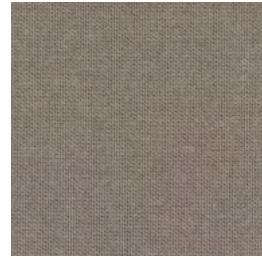
0171



0191



0221



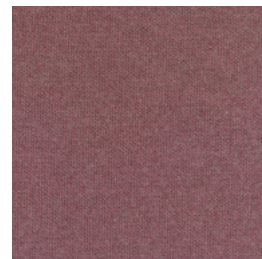
0331



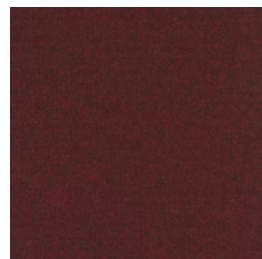
0361



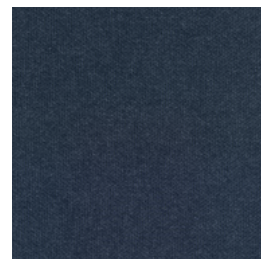
0551



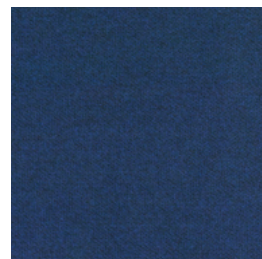
0651



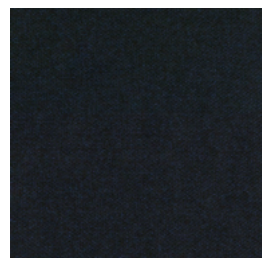
0681



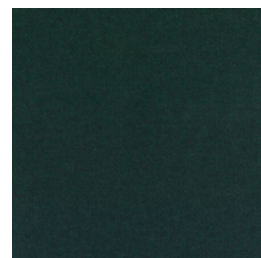
0751



0771



0791



0971



STORY

HAY

A canvas designed to create a more relaxed, contemporary look. Made from minimum 75% recycled cotton, Story possesses a surprisingly crisp and smooth quality not often seen in a canvas. With an extensive colour palette ranging from known classics to lively hues such as purple and yellow, Story offers a large array of options for soft upholstery and cushions in residential and contract settings.



Story 023





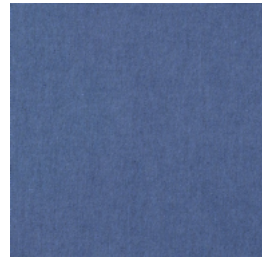
STORY



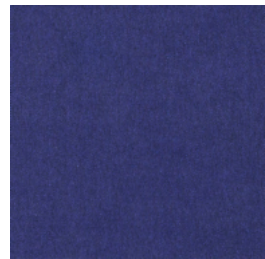
014



018



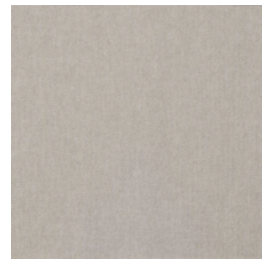
023



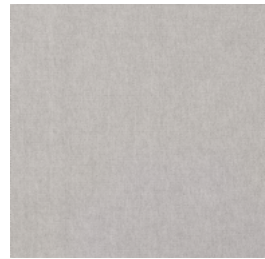
025



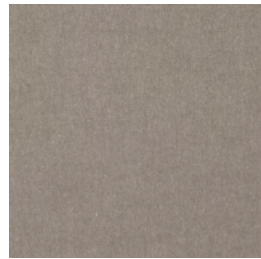
031



100



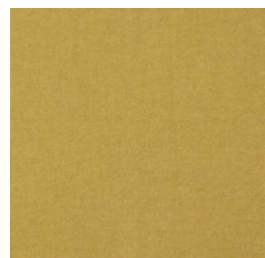
102



110



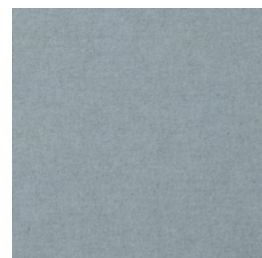
136



304



315



250







Mags Soft 2,5-Seater | Story 102

TURF

HAY

Introducing a new bouclé fabric to our range, Turf combines a deliberately irregular structure with a soft hand-feel to offer superior comfort and warmth. Offered in a classic colour palette that mixes elegant neutrals with rich tones, Turf brings vibrance and dimension to sofas, armchairs, and cushions in most interior settings.



Turf Cream mélange



Turf Dark green

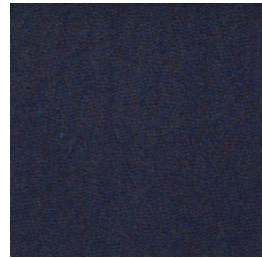
TURF



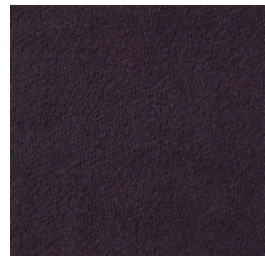
Blue black



Blue grey



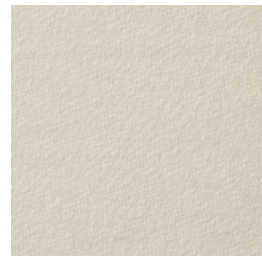
Blue red mélange



Burgundy



Creme mélange



Cream



Dark green



Grey



Light grey



Royal blue



Sand





Turf Blue grey, light grey stitches



Mags Soft 2,5-Seater | Turf Blue grey

VANIR

Design by Raf Simons, Kvadrat

Evolving from Raf Simons' fascination with translating the subtle colour and texture of a classic fashion textile into a furniture fabric, Vanir is a felted woollen textile inspired by historical military coats. Created through a technique resulting in a dense yet soft felt with discreet speckles of colour, the density of the fabric and dissolved highlights bring extra depth and dimension. The neutral palette offers earthy tones reminiscent of a classic tweed, paired with fresh colours in unexpected combinations for a sophisticated and hard-wearing upholstery that is easy to integrate into wide variety of private and public contexts.



Vanir 913

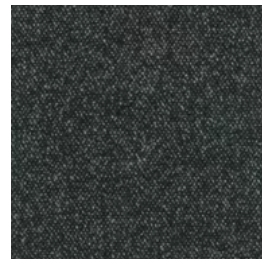
VANIR



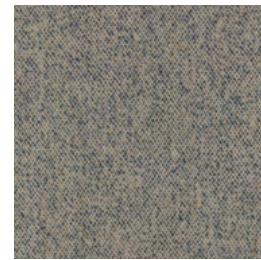
0113



0133



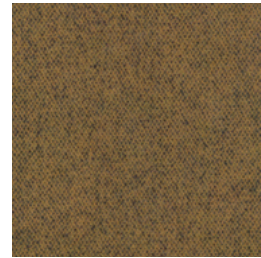
0193



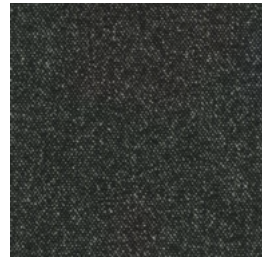
0243



0293



0363



0373



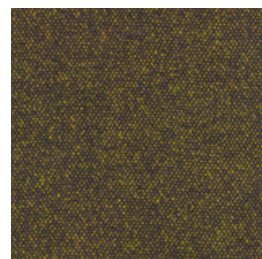
0393



0413



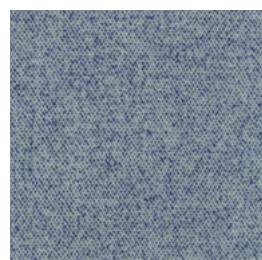
0443



0473



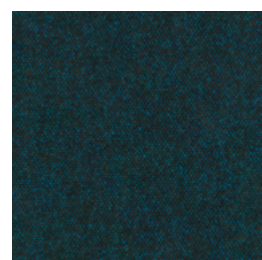
0693



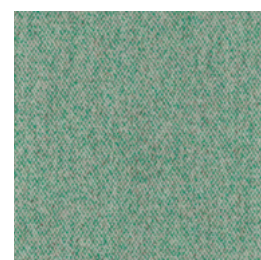
0733



0773



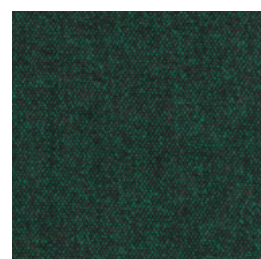
0883



0913



0943



0983







Arbour 2- Seater | Vanir 0113

OVERLAP

Crafted from 100% recycled polyester, Overlap's yarn composition provides an exclusive look and feel – combining incredible softness with a tactile quality reminiscent of natural linen. Available in a neutral palette with a good variety of colours, Overlap's soft surface combined with its classic expression make it a versatile upholstery well suited to a wide range of dining or lounge furniture in both residential and public environments.



Overlap 01





Quilton 2-Seater | Overlap 01

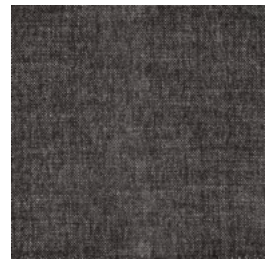
OVERLAP



01



03



04



05



08



11



14



26







Mags Low 3-Seater | Overlap 03



Overlap 03



YUMA

HAY

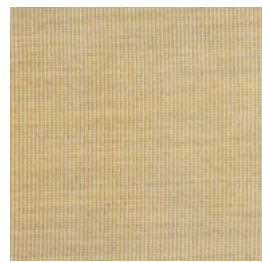
Crafted in a wool mix with a textural striped surface, Yuma has a classic yet distinct expression. Offered in a variety of beautiful colours, ranging from soft pink to bright blue, as well as neutral and monochromatic variants, Yuma's softness and elegant stripes are ideal for elevating furniture in lounge areas.



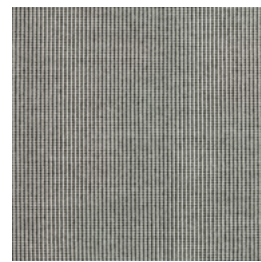


Mags 2,5-Seater | Yuma 833

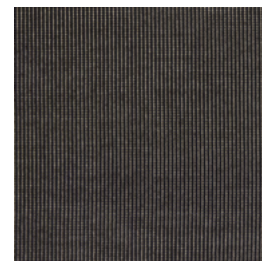
YUMA



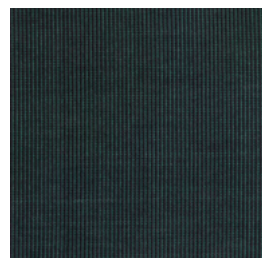
833



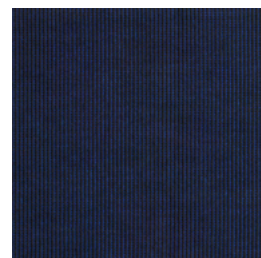
1009



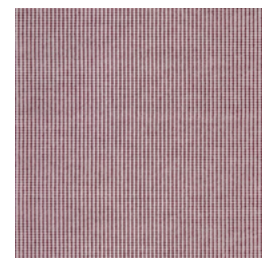
1010



1012



1477



1851



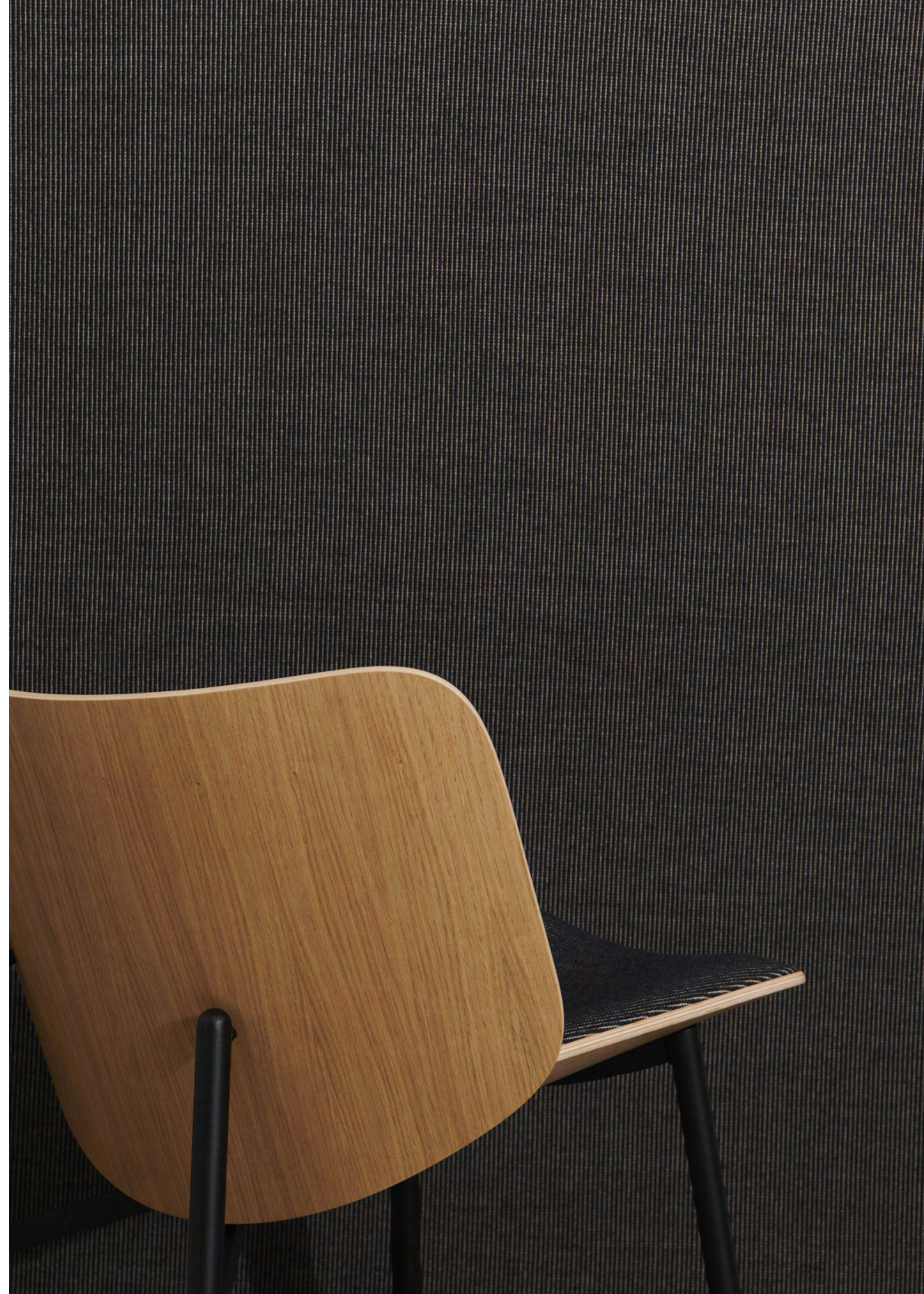


Silhouette 2 seater | Yuma 1851



Mags Wide Middle Module | Yuma 1851





VOLUME

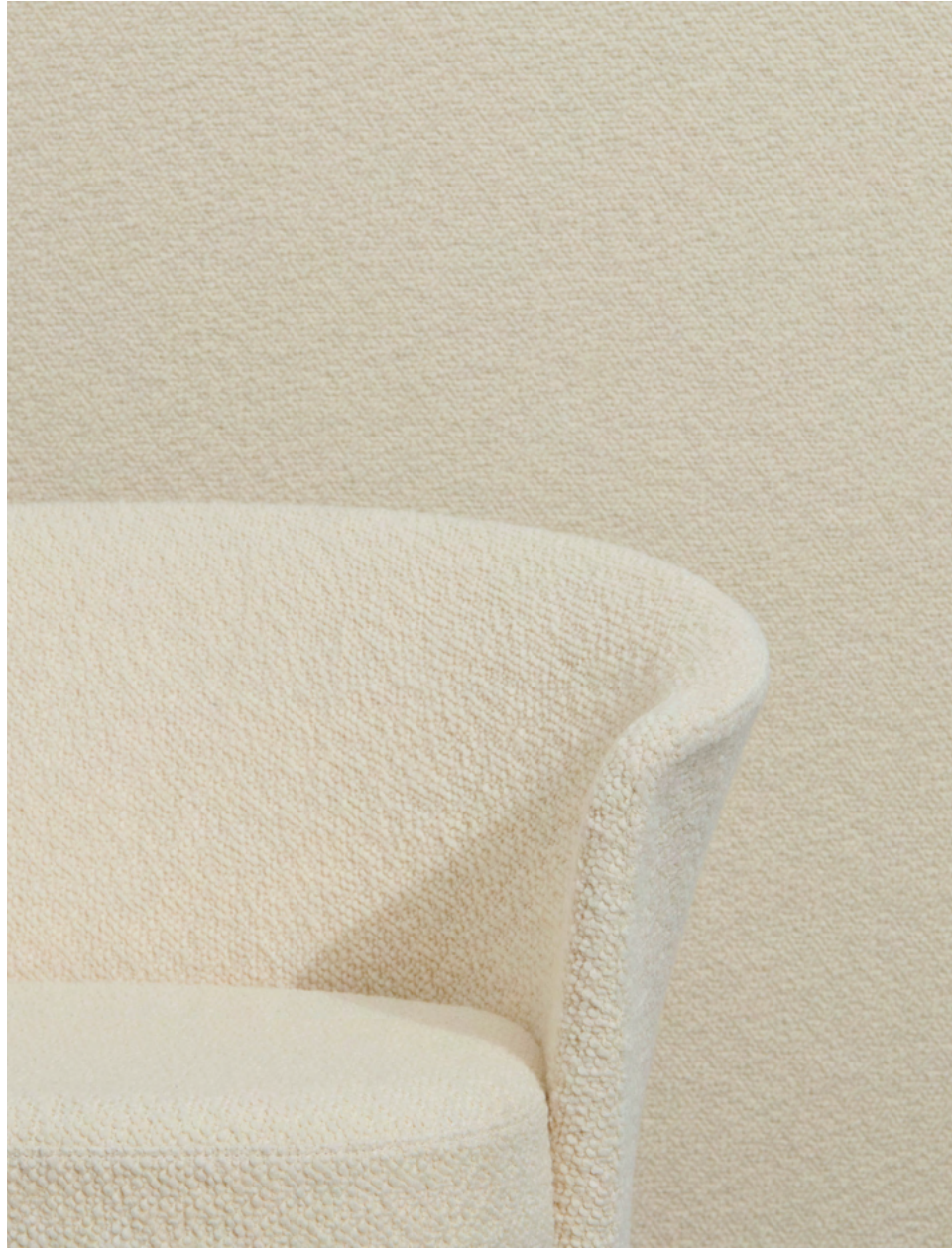
HAY

Offering a more generous bouclé than Turf, Volume uses the softness and density of a slightly heavier weight yarn to make a refined fabric with a rich expression. Available in a selection of neutral shades, Volume's warmth and vibrant tactile quality complement a wide range of soft furnishings in domestic and contract environments.





Quilton Lift 2-Seater | Volume 30





VOLUME



01



22

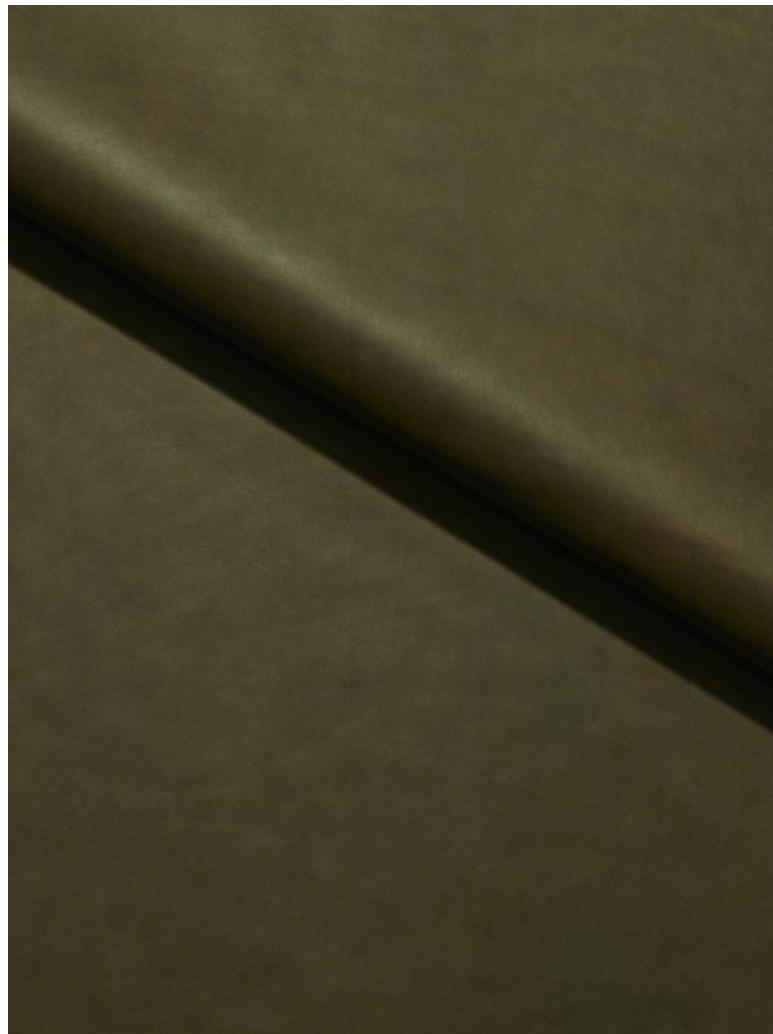


30



SENSE

A new addition to our growing Sense semi aniline leather collection. The deep shade of green perfectly complements the colour range by bringing a contemporary expression to our leather palette. The natural softness and richness of tone make it ideal for upholstering chairs and sofas in a wide variety of dining and lounge interior spaces.



Sense Forrest





Sense Forrest





Mags Soft Low 2,5 Seater| Sense forest, beige stitches

Packshots and lifestyle photos are available in a folder in Digital Library.

DIGITAL LIBRARY

For a more detailed overview, please see the Fabric and Leather Presentation, which includes all technical specifications for all fabrics and leathers.

FABRIC AND LEATHER OVERVIEW



AAL 87 | Turf royal blue